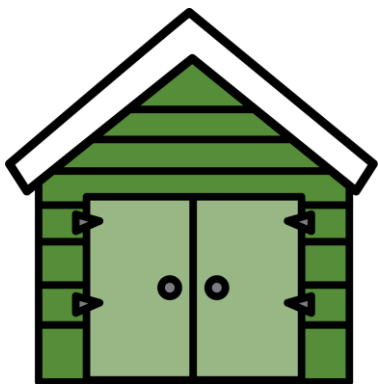


■ A NOTE FROM TARA WEST

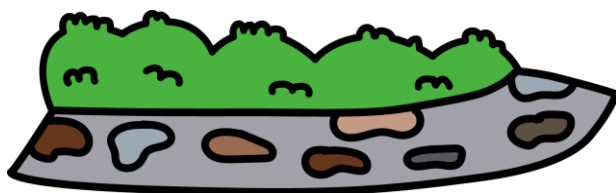
This is a set of 75 sound clip it cards. These cards give students an opportunity to practice digraphs, double endings, and blend words in a hands-on and engaging way. The students will get the opportunity to clip the missing beginning sound, medial sound, or final sound. Students will have to clip the corresponding letter (sound) amongst the distractor letters. A black and white version is included for budget saving prep. The cards can also be printed two or four sheets onto one sheet to save in ink and paper. If you have any additional questions as always, feel free to email me at littlemindsatworkLLC@gmail.com, follow me on [Facebook](#), or visit my blog, [Little Minds at Work](#).





ed

sh th ch



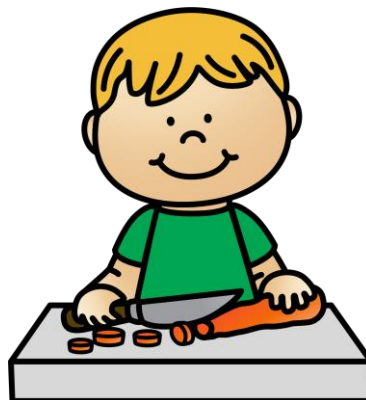
ath

b p d



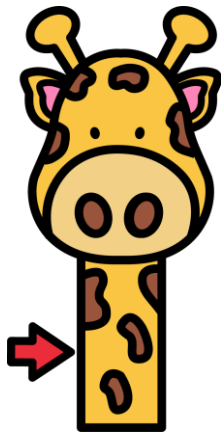
ish

n m w



op

sh th ch

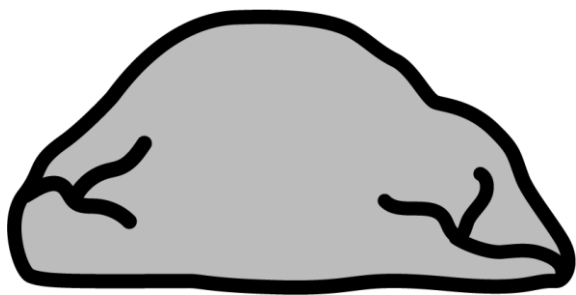


n ck

i

a

e

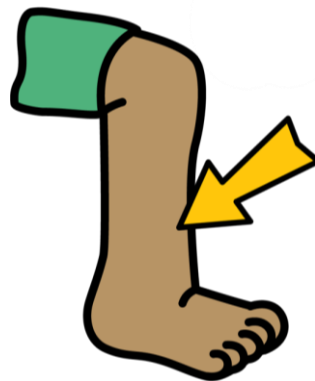


r ck

o

u

a



sh n

a

i

e



wh ck

o

a

u



lo

ck

th

ch



ca

ck

sh

ch

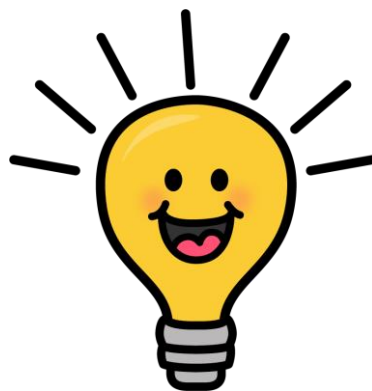


ba

ck

th

sh



whi

v

z

f

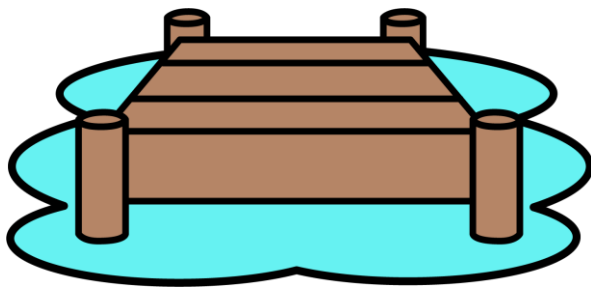


ash

r

c

b

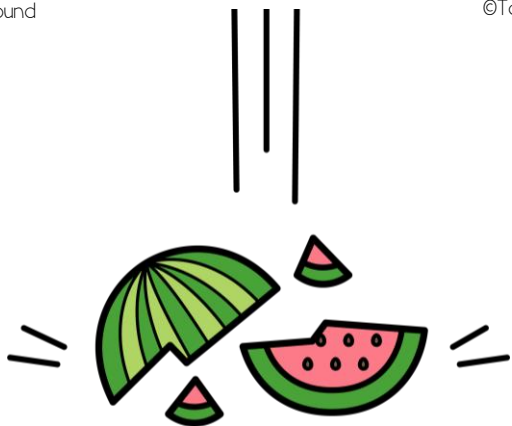


ock

d

b

p



ud

sh

th

ch

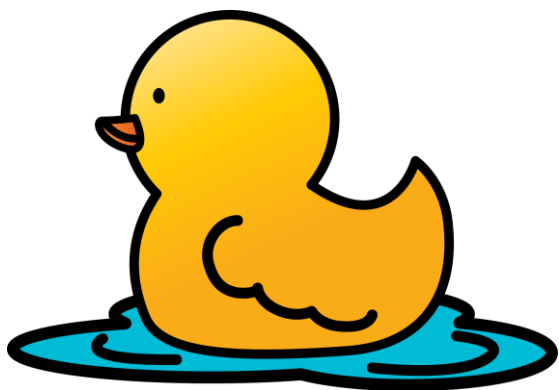


ick

c

k

s



d ck

i

a

u



sh p

a

o

u



s ck

o

u

a

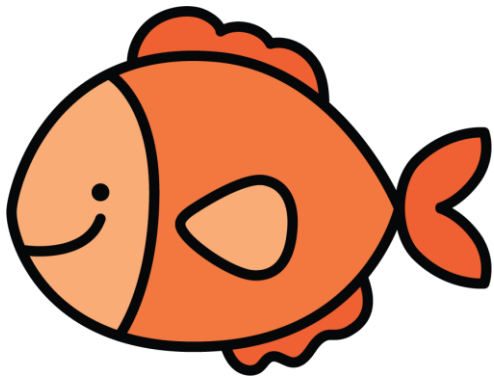


ch p

o

i

u



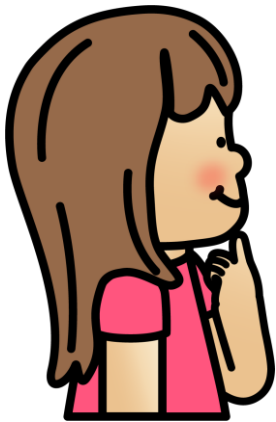
fi

sh th ch



shu

t p n



chi

d f n



shi

p g n

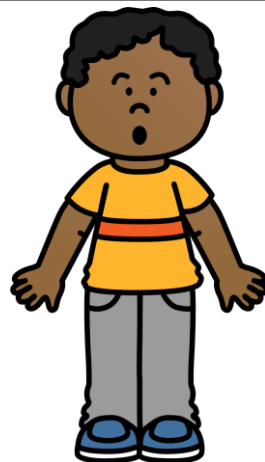


ash

r

c

b

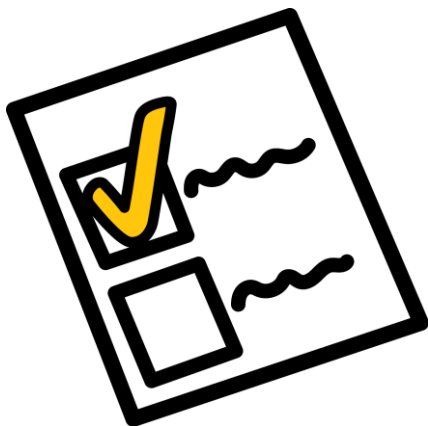


ock

sh

th

ch

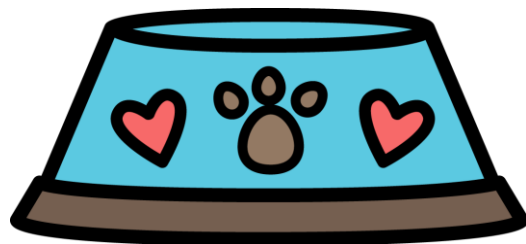


eck

sh

th

ch

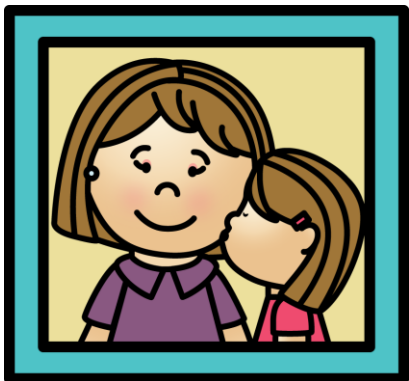


ish

b

d

q

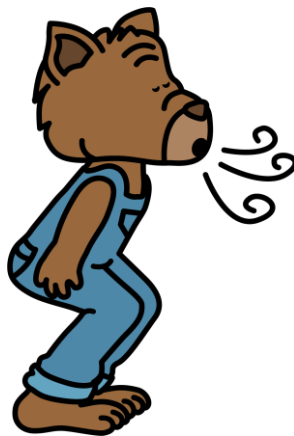


k ss

i

a

e

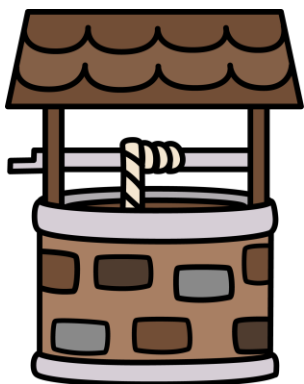


p ff

a

o

u



w ll

i

e

a



wh ff

e

a

i



ye

ll

ff

ss



me

zz

ff

ss



bu

ll

zz

ss

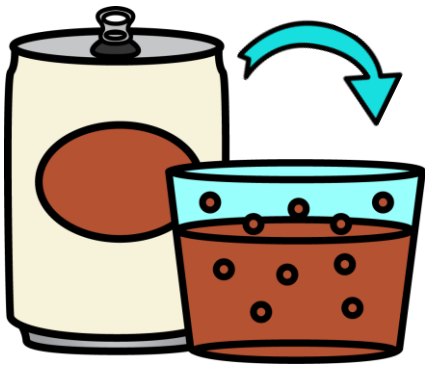


fi

ll

ff

zz

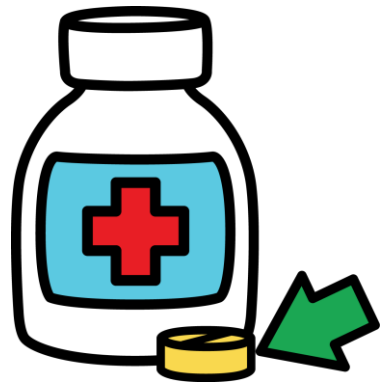


izz

f

t

b

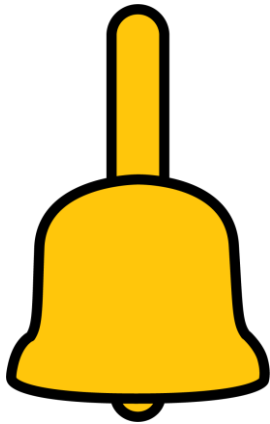


ill

q

b

p



ell

p

b

d

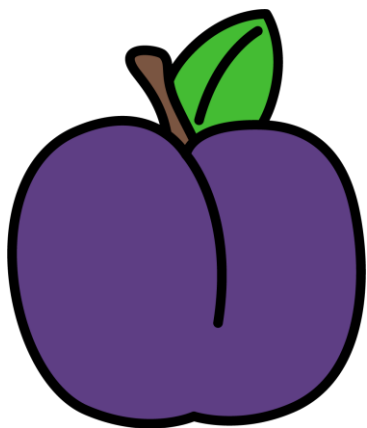


uss

d

f

t



pl m

i

a

u

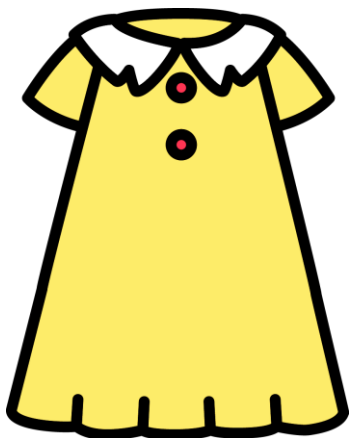


sk p

e

o

i

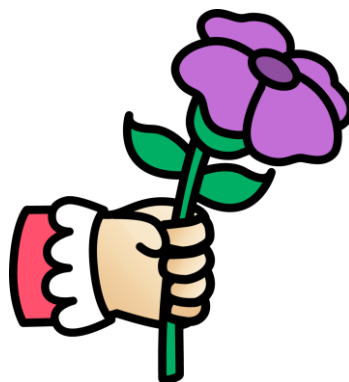


dr ss

i

e

a

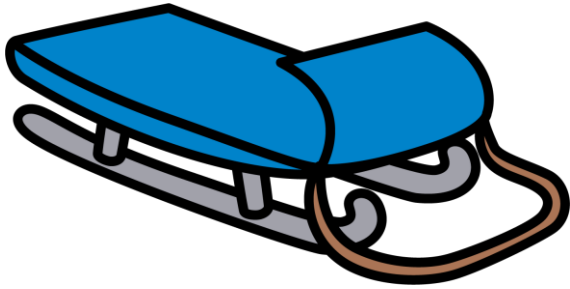


gr b

o

a

u



sle

d

k

b

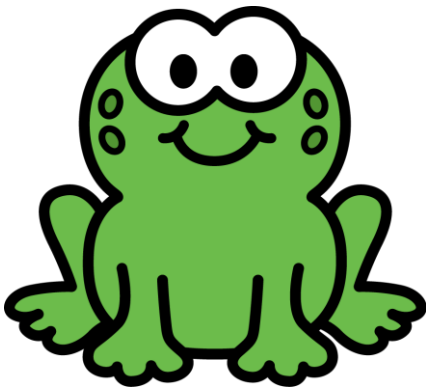


cla

q

p

n

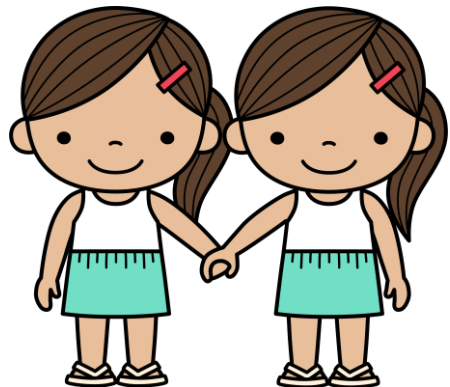


fro

s

q

g



twi

v

g

n



ock

cr

sm

br



ash

cr

gr

br

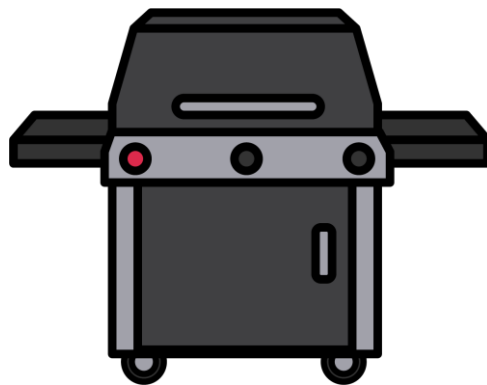


ush

cr

gr

br



ill

cr

gr

br

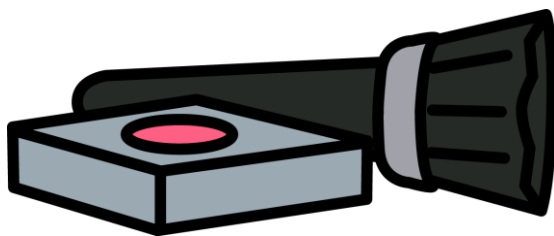


sp n

i

a

e



bl sh

a

o

u



fl ss

i

o

a



cl ss

o

a

u

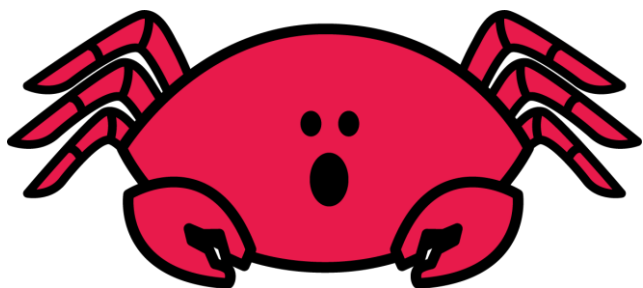


sna

p

g

b

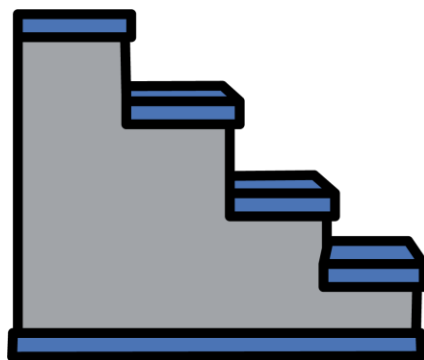


cra

b

f

d



ste

t

p

n

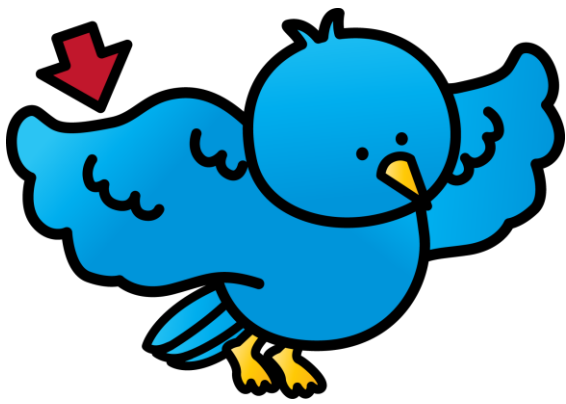


swi

k

n

m

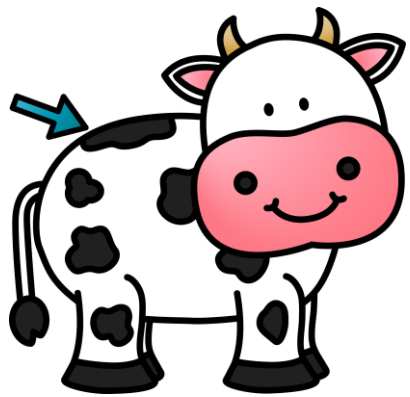


ap

gl

fl

pl



ot

sk

sn

sp



ush

br

gr

tr

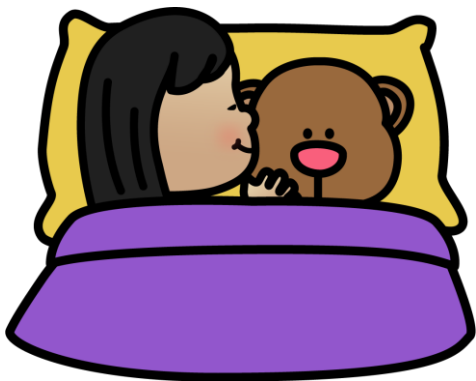


ip

dr

tr

cr



sn g

e

a

u

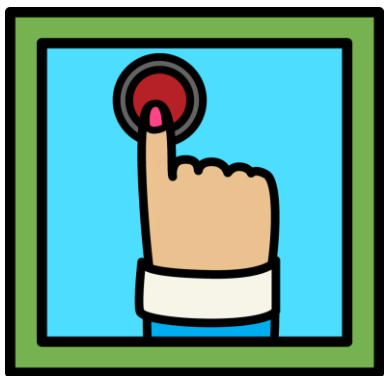


sn p

a

i

u



pr ss

i

e

o

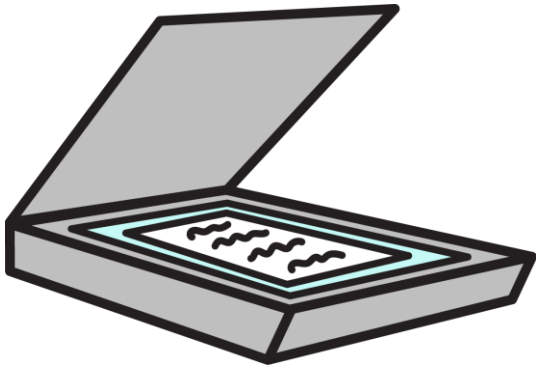


sp ll

i

a

u



sca

t

n

b

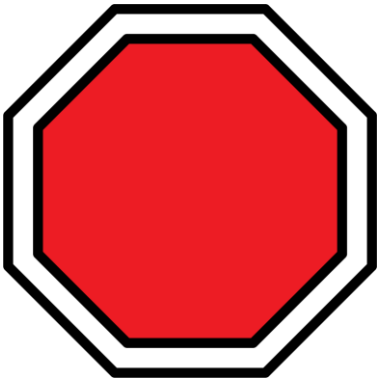


fli

t

p

b

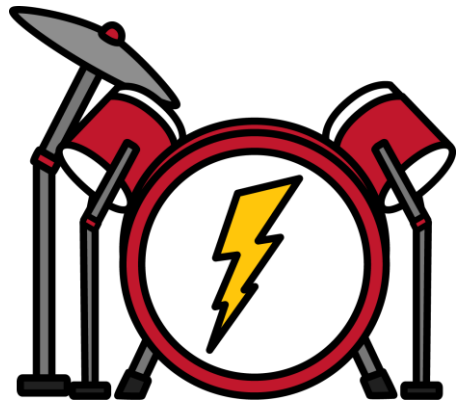


sto

p

f

g

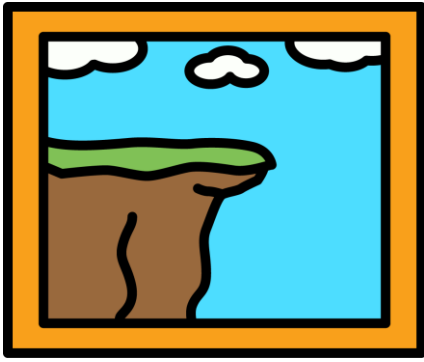


dru

n

m

b



iff

gl

fl

cl



ack

sn

sk

st

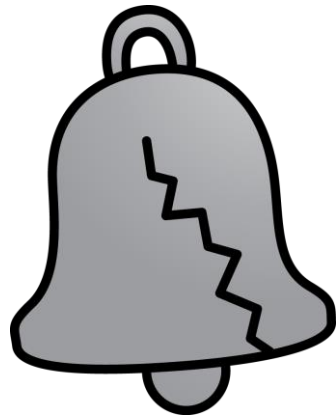


ad

gl

fl

cl

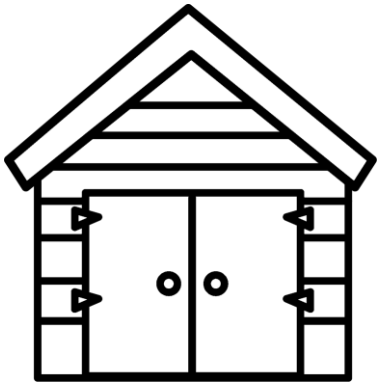


ack

tr

cr

gr



ed

sh

th

ch



ath

b

p

d



ish

n

m

w

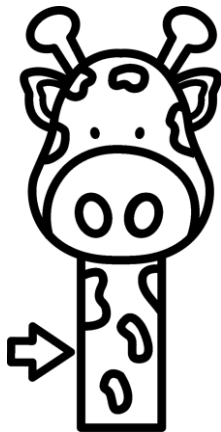


op

sh

th

ch

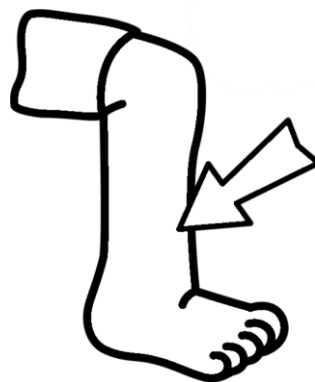


n ck

i

a

e

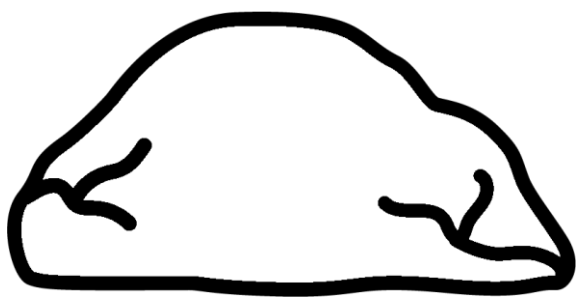


sh n

a

i

e

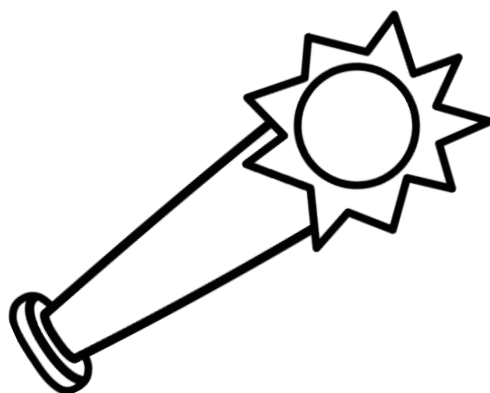


r ck

o

u

a

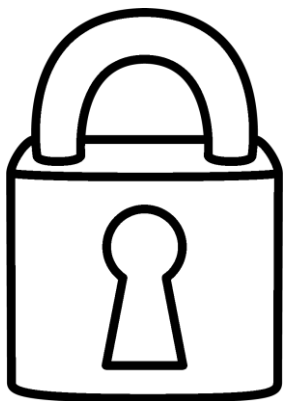


wh ck

o

a

u



lo

ck

th

ch



ca

ck

sh

ch

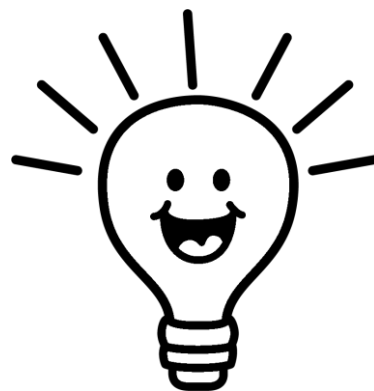


ba

ck

th

sh

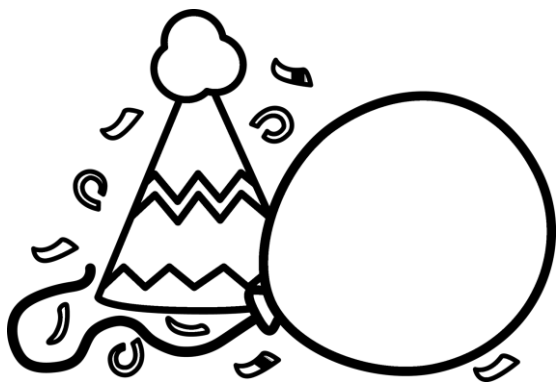


whi

v

z

f

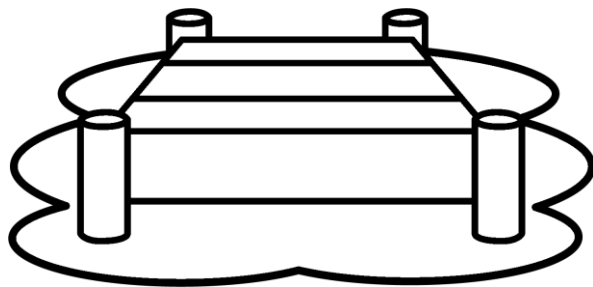


ash

r

c

b



ock

d

b

p



ud

sh

th

ch

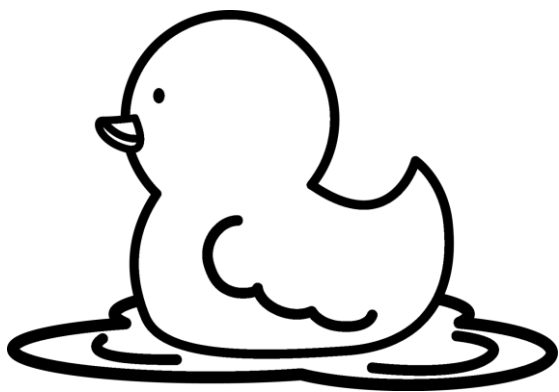


ick

c

k

s



d **ck**

i

a

u



sh **p**

a

o

u

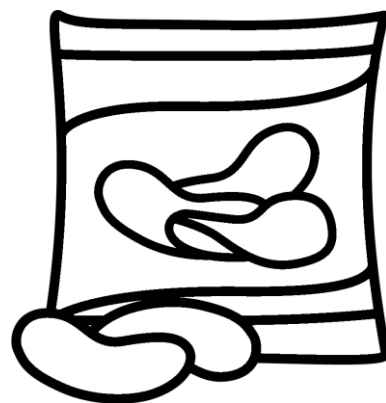


s **ck**

o

u

a

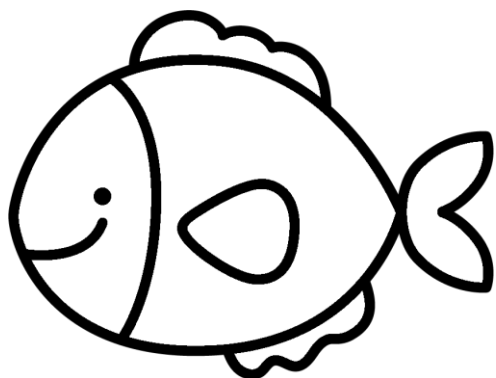


ch **p**

o

i

u



fi

sh

th

ch

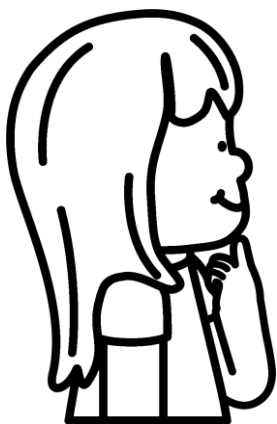


shu

t

p

n

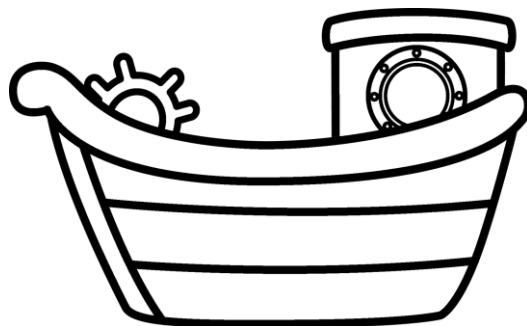


chi

d

f

n

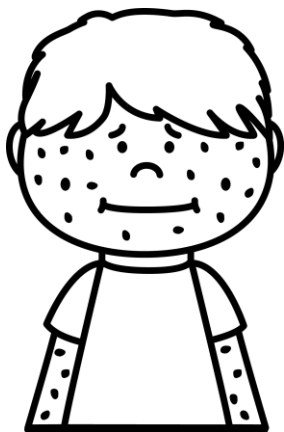


shi

p

g

n

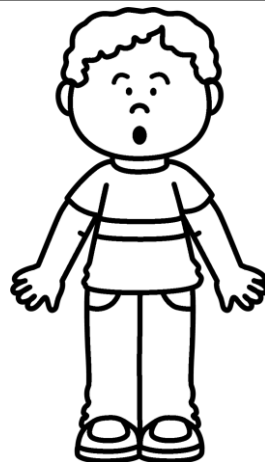


ash

r

c

b

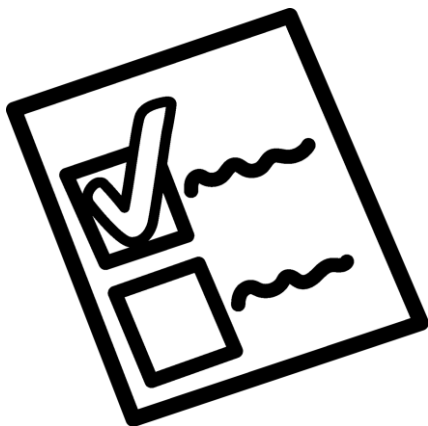


ock

sh

th

ch



eck

sh

th

ch

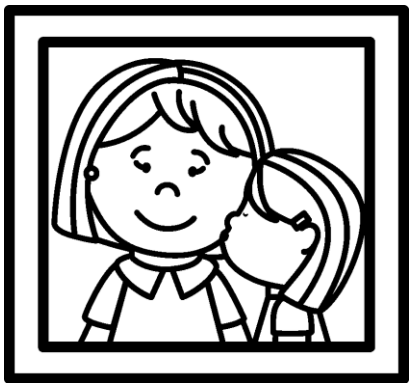


ish

b

d

q

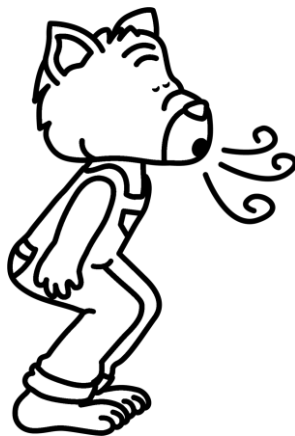


k **ss**

i

a

e

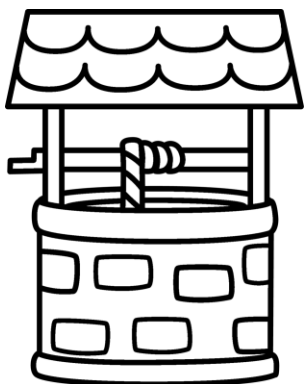


p **ff**

a

o

u



w **ll**

i

e

a

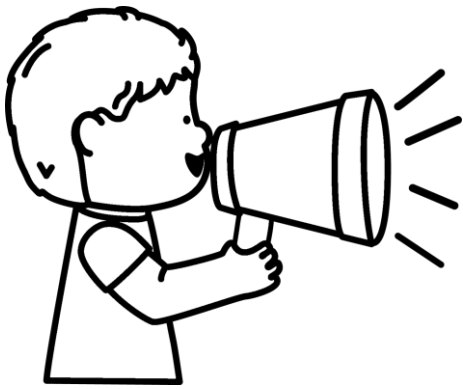


wh **ff**

e

a

i

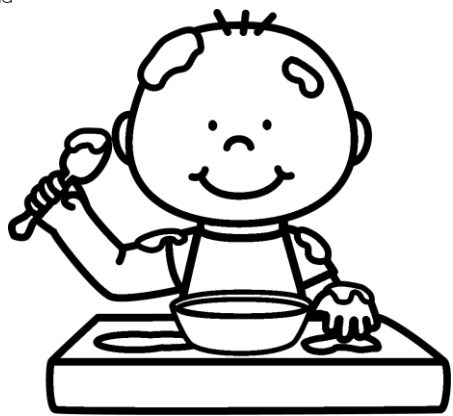


ye

||

ff

ss



me

zz

ff

ss



bu

||

zz

ss

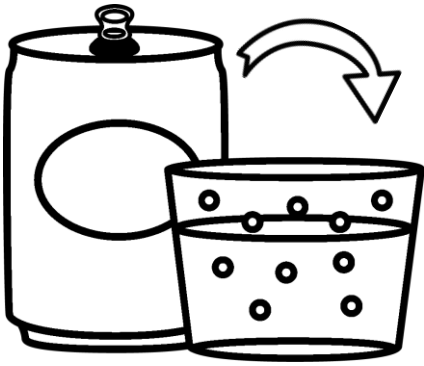


fi

||

ff

zz



izz

f

t

b

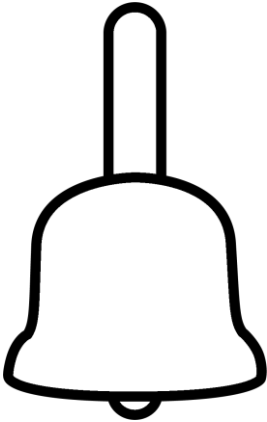


ill

q

b

p



ell

p

b

d

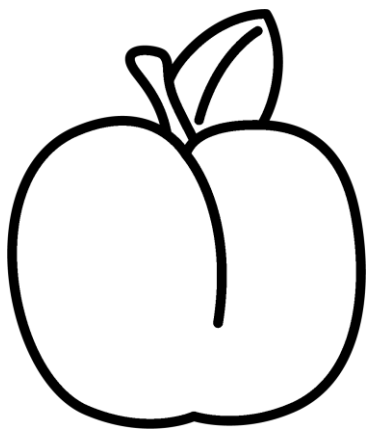


uss

d

f

t



pl m

i

a

u

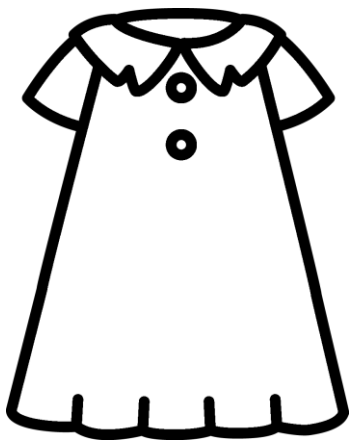


sk p

e

o

i

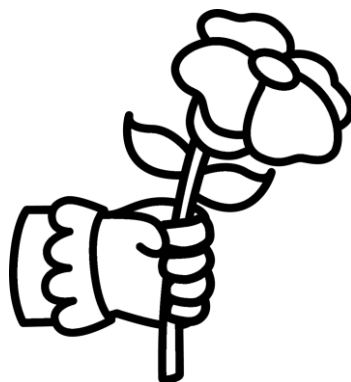


dr ss

i

e

a

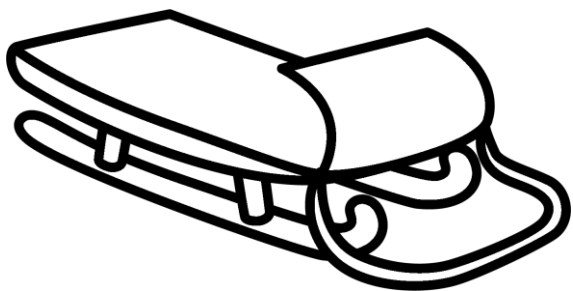


gr b

o

a

u

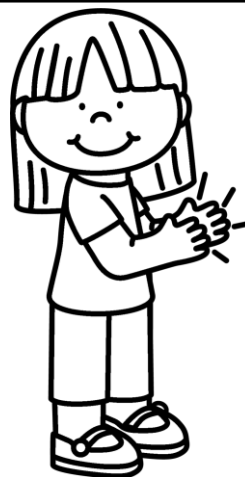


sle

d

k

b

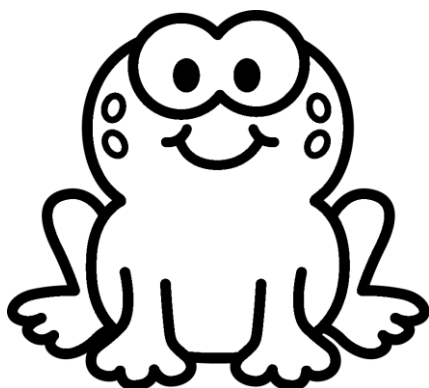


cla

q

p

n



fro

s

q

g

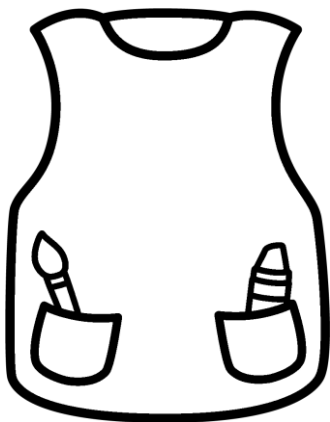


twi

v

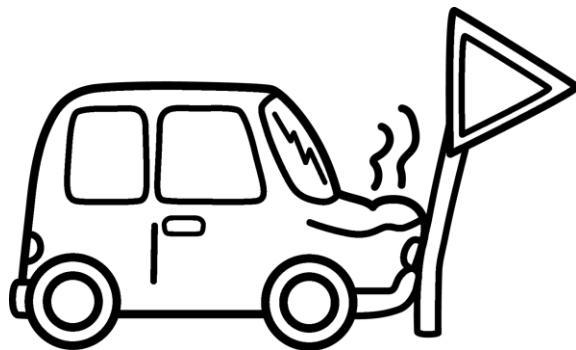
g

n



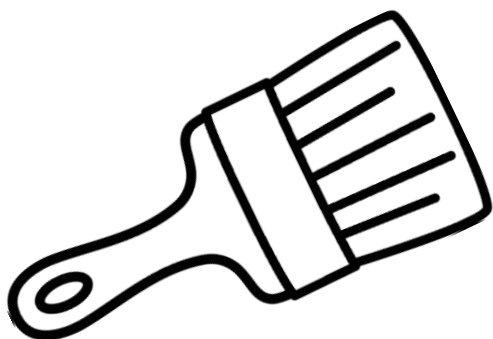
ock

cr sm br



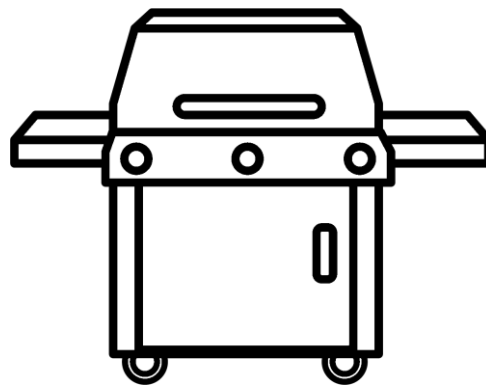
ash

cr gr br



ush

cr gr br



ill

cr gr br

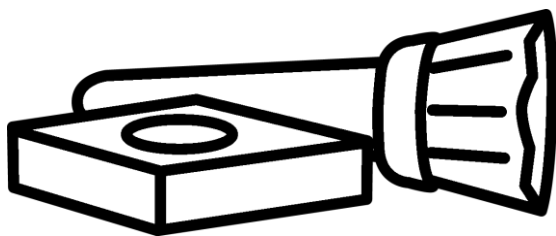


sp n

i

a

e

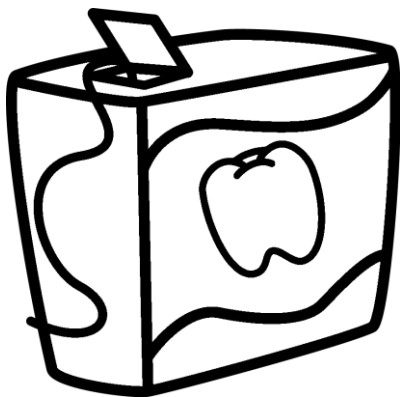


bl sh

a

o

u

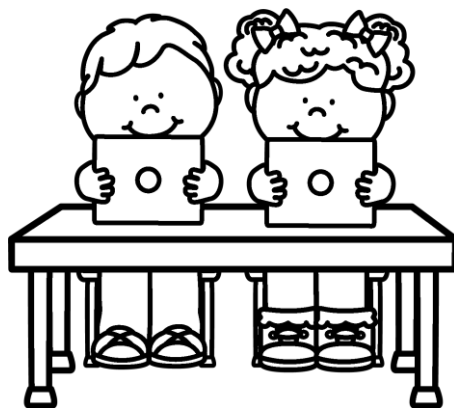


fl ss

i

o

a



cl ss

o

a

u

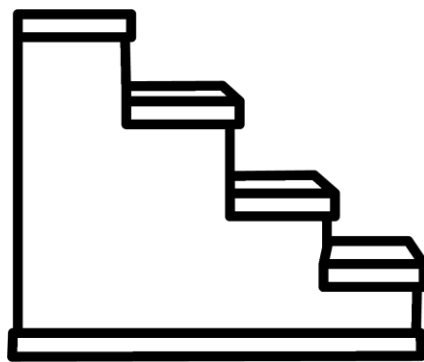


sna

p

g

b

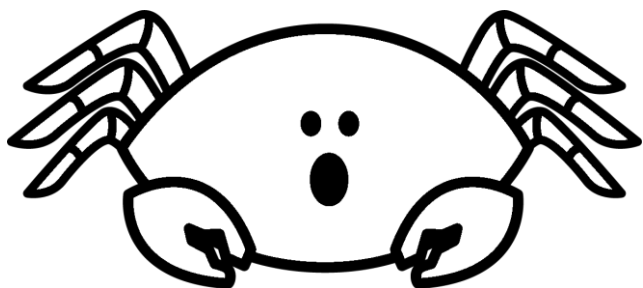


ste

t

p

n



cra

b

f

d

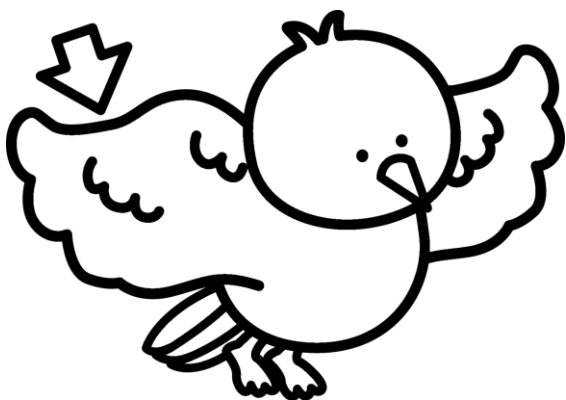


swi

k

n

m

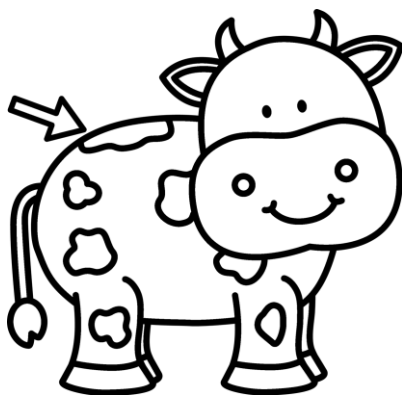


ap

gl

fl

pl



ot

sk

sn

sp

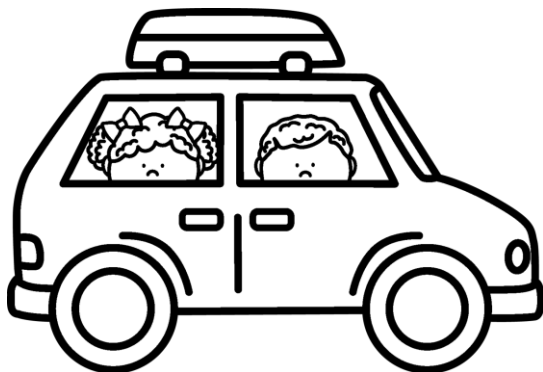


ush

br

gr

tr

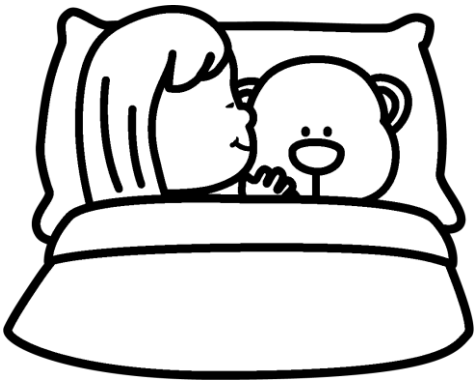


ip

dr

tr

cr

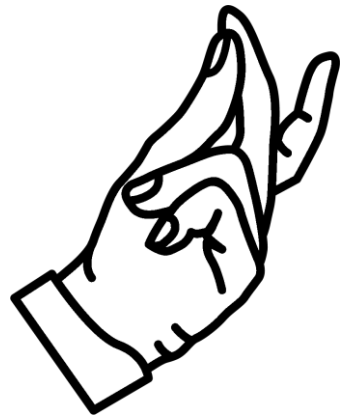


sn g

e

a

u



sn p

a

i

u



pr ss

i

e

o

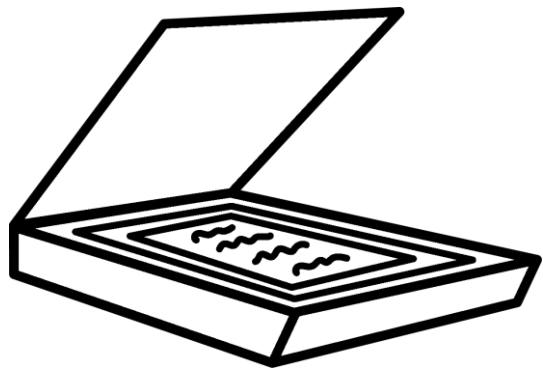


sp ll

i

a

u

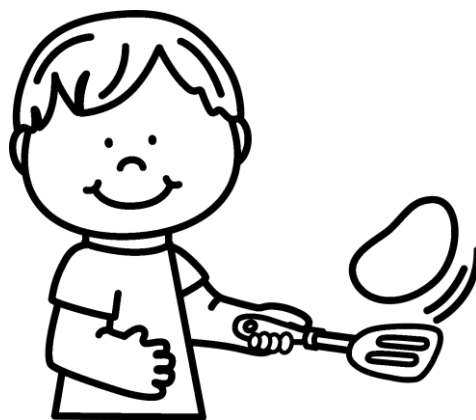


sca

t

n

b

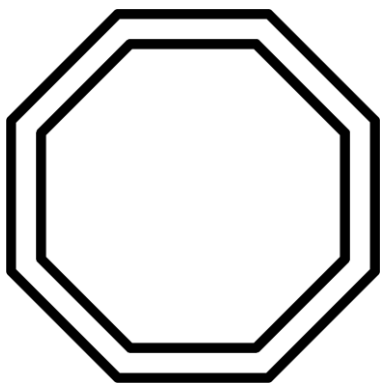


fli

t

p

b

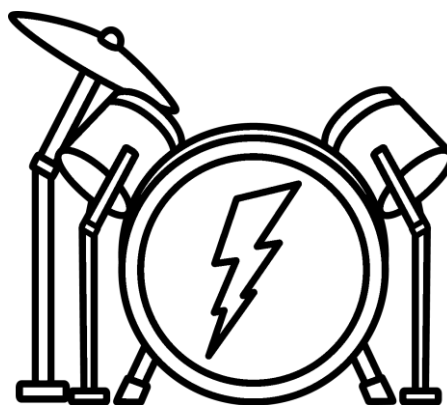


sto

p

f

g

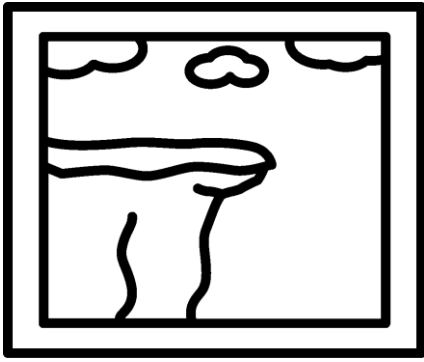


dru

n

m

b



☐ iff

gl

fl

cl



☐ ack

sn

sk

st

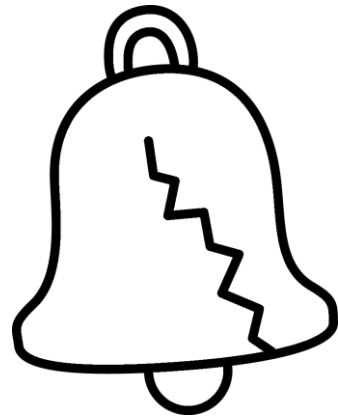


☐ ad

gl

fl

cl



☐ ack

tr

cr

gr



This packet is the property of Tara West and is protected through copyright and trademark registrations. All rights reserved.

No part of this digital download may be reproduced electronically, shared without additional licenses, or placed on the internet for others to access without the prior permission from the publisher, Tara West.

If you are a school district using this download as curriculum for more than one teacher an additional school license will need to be purchased.

Fonts used within this download are intellectual property of Kimberly Geswein and Print Designs by Kris.

The clipart images are intellectual property of [Laura Strickland of Whimsy Clips](#).

Contact Information

Email: littlemindsatworkLLC@gmail.com

Website: www.littlemindsatwork.org

Store: <http://www.teacherspayteachers.com/Store/Tara-West>